

OFFICE SPACE FOR LEASE

East Side Location *First Month's Rent is Free!*

For more
information
or to
schedule
a showing
please contact
Tony or Tim.



ADDRESS

5940 E. Central
(Between Woodlawn & Edgemoor, north of Central)

SUITE

SIZE

200 4,940 sq. ft.

LEASE RATE

\$13.00 psf, full service lease
\$5,351.67 mo.

REMODEL WORK

New carpet and paint by landlord.

HIGHLIGHTS

- East side address
- Front door parking
- Monument sign available
- On-site ownership and management
- Near restaurants, banks, fitness and retail
- Convenient accessibility
- Includes conference room and break room

Updated 11/7/22



Tony Utter: 316-990-8710 (mobile) / 316-263-2448 (office)
CCIM, JD tony@utterproperties.com

Tim Utter: 316-871-1628 (mobile) / 316-263-2448 (office)
tim@utterproperties.com

5940 E. Central / Aerial

For more
information
or to
schedule
a showing
please contact
Tony or Tim.

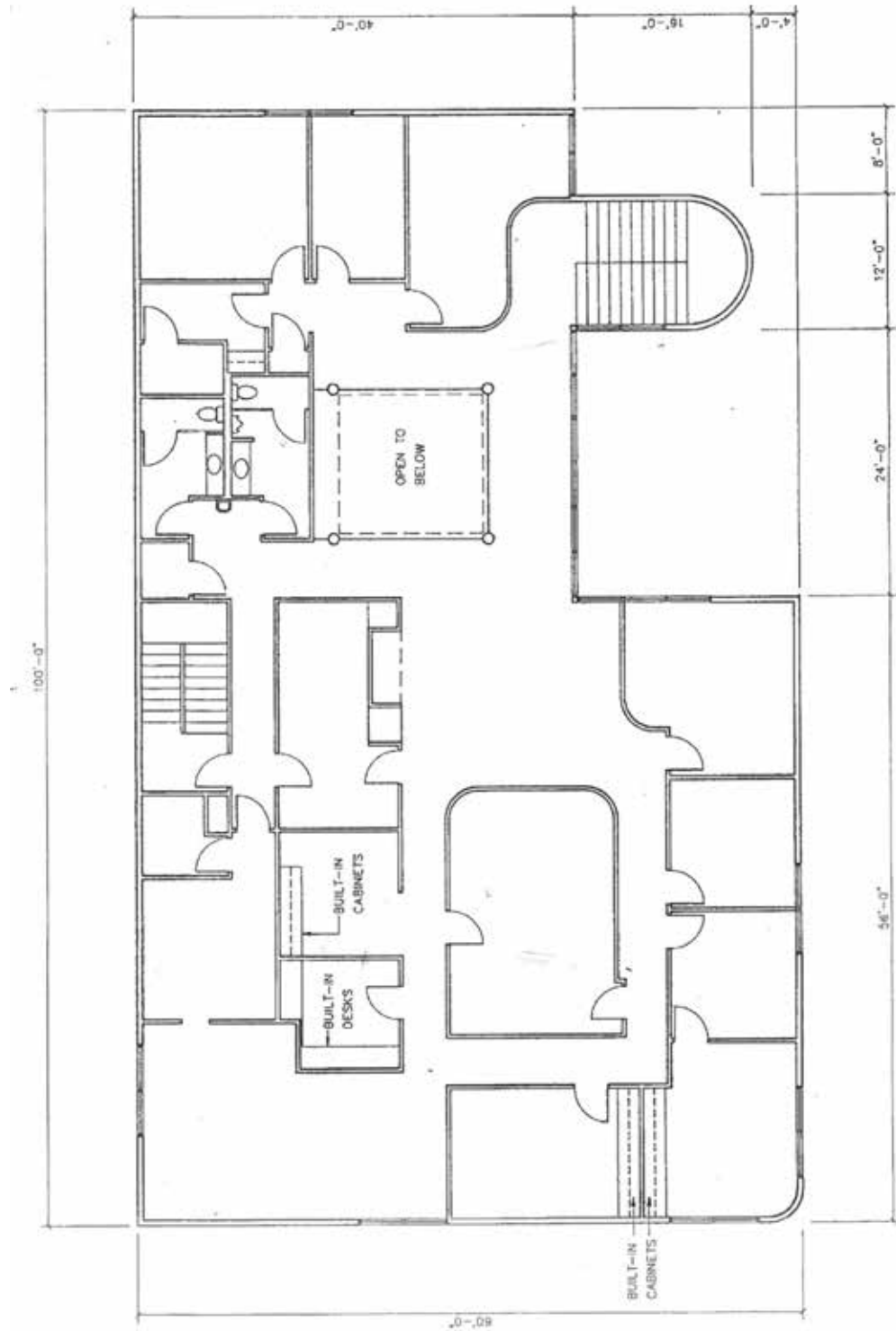


Tony Utter: 316-990-8710 (mobile) / 316-263-2448 (office)
CCIM, JD tony@utterproperties.com

Tim Utter: 316-871-1628 (mobile) / 316-263-2448 (office)
tim@utterproperties.com

5940 E. Central / 2nd Floor

For more
information
or to
schedule
a showing
please contact
Tony or Tim.



Tony Utter: 316-990-8710 (mobile) / 316-263-2448 (office)
CCIM, JD tony@utterproperties.com

Tim Utter: 316-871-1628 (mobile) / 316-263-2448 (office)
tim@utterproperties.com