

# OFFICE SPACE FOR LEASE

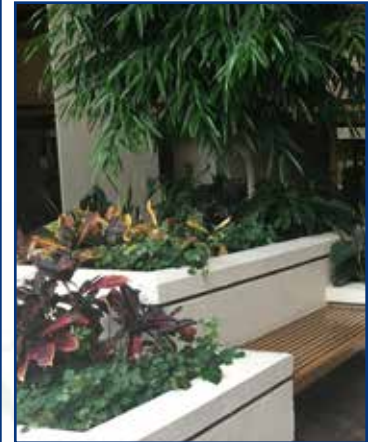
## River Park Place

*Full floor available with 21,402 sq. ft.  
Overlooking the river!*



[Click here for virtual tour of Ste. 400 & more](#)

[Click here for video tour](#)



For more  
information  
or to  
schedule  
a showing  
please contact  
Tony or Tim.

### **ADDRESS**

727 N. Waco (Murdock & Waco)

### **LEASE RATE**

\$18.00 psf, full-service (Stes. 175 & 400)

### **SUITE      SIZE**

175	1,267 sq. ft.
280-1	Single Office (\$500 mo.)
280-3	Single Office (\$500 mo.)
400	21,402 sq. ft. (divisible)

### **COMMENTS**

- Downtown address, easy accessibility
- Stes. 175 & 400 overlook Arkansas River
- Street signage
- Building break room & conference room
- Fiber optic and cable ready
- Professionally managed by UCPM

### **PARKING**

Abundant free parking for  
tenants and visitors

Updated 3/20/24

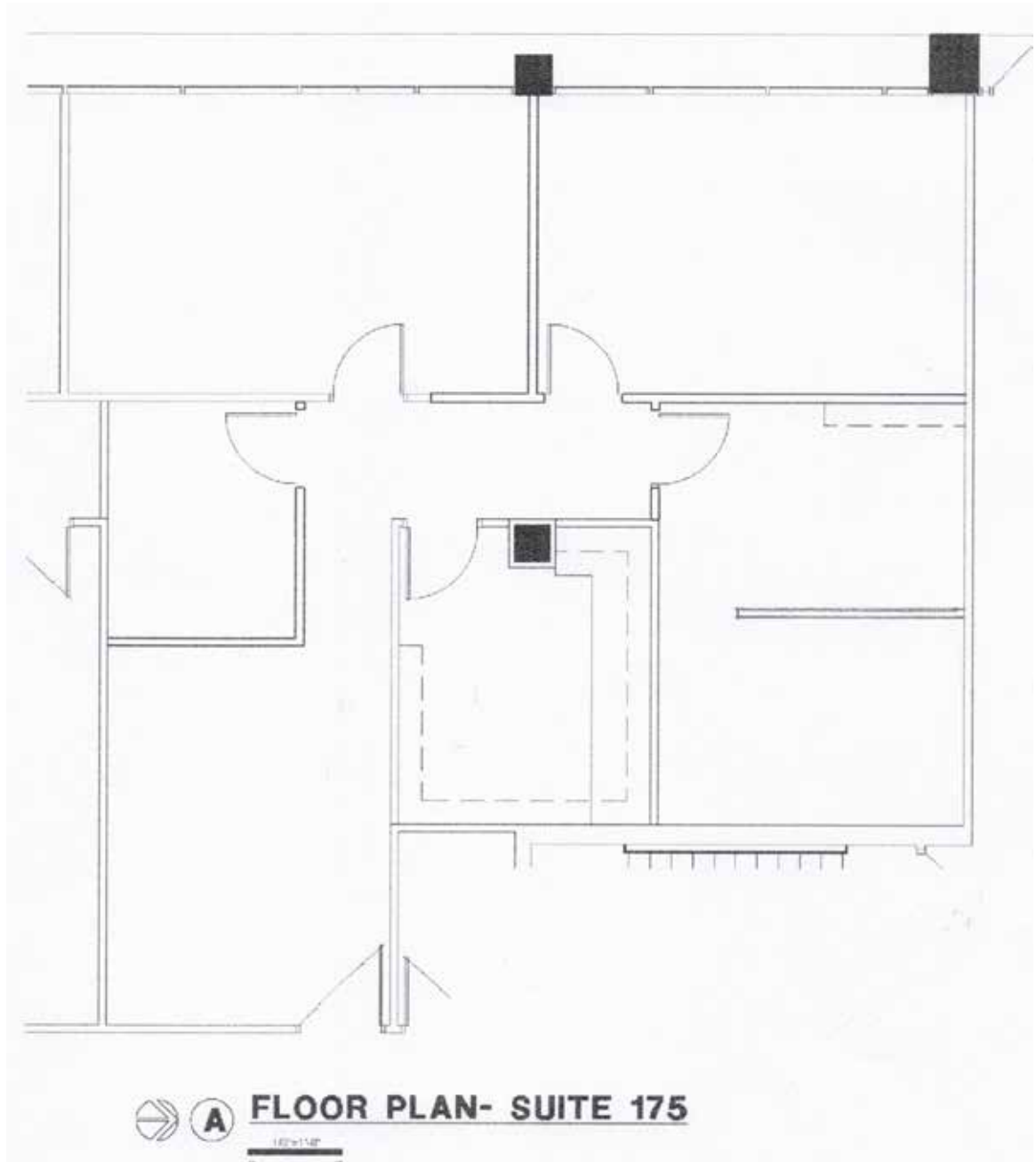


Tony Utter: 316-990-8710 (mobile) / 316-263-2448 (office)  
CCIM, JD [tony@utterproperties.com](mailto:tony@utterproperties.com)

Tim Utter: 316-871-1628 (mobile) / 316-263-2448 (office)  
[tim@utterproperties.com](mailto:tim@utterproperties.com)

# River Park Place / Suite 175

For more  
information  
or to  
schedule  
a showing  
please contact  
Tony or Tim.



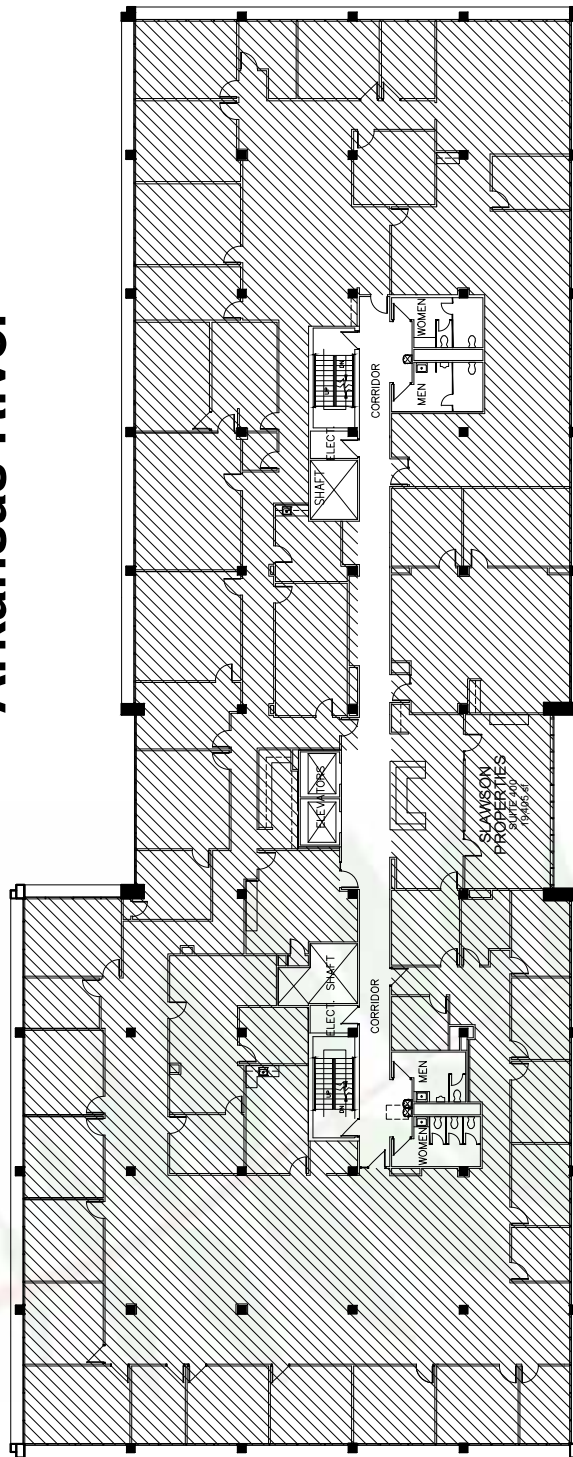
Tony Utter: 316-990-8710 (mobile) / 316-263-2448 (office)  
CCIM, JD [tony@utterproperties.com](mailto:tony@utterproperties.com)

Tim Utter: 316-871-1628 (mobile) / 316-263-2448 (office)  
[tim@utterproperties.com](mailto:tim@utterproperties.com)

# River Park Place / Fourth Floor

For more  
information  
or to  
schedule  
a showing  
please contact  
Tony or Tim.

Arkansas River



4 FOURTH FLOOR PLAN  
0 10' 20' 40'



Tony Utter: 316-990-8710 (mobile) / 316-263-2448 (office)  
CCIM, JD tony@utterproperties.com

Tim Utter: 316-871-1628 (mobile) / 316-263-2448 (office)  
tim@utterproperties.com

The information contained herein was obtained from sources believed reliable, however, Utter Commercial Real Estate, Inc. dba Utter Commercial Property Management makes no guarantees, warranties or representations as to the completeness or accuracy thereof. The presentation of this property is submitted subject to errors, omissions, change of price or conditions prior to lease, or withdrawal without notice.

# River Park Place / Aerial

For more  
information  
or to  
schedule  
a showing  
please contact  
Tony or Tim.



Tony Utter: 316-990-8710 (mobile) / 316-263-2448 (office)  
CCIM, JD [tony@utterproperties.com](mailto:tony@utterproperties.com)

Tim Utter: 316-871-1628 (mobile) / 316-263-2448 (office)  
[tim@utterproperties.com](mailto:tim@utterproperties.com)